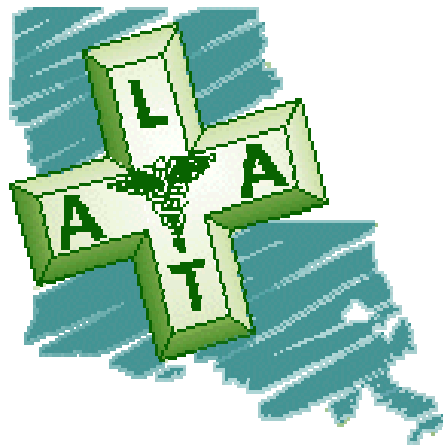


LAGNIAPPE

The Official Newsletter of the Louisiana
Athletic Trainers' Association



Summer
2005

In This Issue:

- NATA Sues to Set Aside CMS Decision..... Page 2
- Grambling Athletic Trainer Loses Battle with Cancer Page 4
- LATA Members Recognized at SEATA..... Page 5
- LATA Committee Updates..... Page 6
- BOC Announces Change to Exam Format..... Page 8
- Proposed Changes to BOC Continuing Ed Guidelines Page 8
- Athletic Training Month Activities..... Page 12
- Employment Opportunities..... Page 13
- Up Coming Events..... Page 17

NATA Sues to Set Aside CMS Decision

The National Athletic Trainers' Association filed a lawsuit Friday, May 27, 2005 seeking to prevent the Centers for Medicare & Medicaid Services (CMS) from restricting certified athletic trainers' ability to practice.

The lawsuit, filed in U.S. District Court in Dallas, requests a temporary restraining order, temporary and permanent injunctive relief and declaratory relief from CMS' new rule regarding "incident to" services, which is slated to take effect June 6, 2005. The suit was filed on NATA's behalf by its counsel, Hughes & Luce, L.L.P. of Dallas.

While the suit seeks to set aside CMS' new rule, it goes a step further by asking that CMS be required to specify that athletic trainers and other allied health professionals are authorized to provide therapy incident to a physician's services.

"We will defend our members' right to practice athletic training to whatever degree we have to, and in this case that means moving forward with legal action," said NATA President Chuck Kimmel, ATC. "CMS made an arbitrary decision that negatively impacts our members. We don't agree with it, and this is our recourse. It's the right thing to do."

The lawsuit stems from a recent decision by CMS to no longer pay for therapy incident to a physician's services unless the provider is a physical therapist, occupational therapist or speech/language pathologist. Under this new rule, doctors would not be able to bill Medicare for treatment provided by athletic trainers. CMS issued a manual May 6, 2005, publicizing its new rule, which would then become effective June 6, 2005.

CMS' new rule puts hundreds of certified athletic trainers' jobs in jeopardy. Some have already lost their jobs or been demoted, and the potential impact would harm every athletic trainer regardless of practice setting.

"This isn't just about ATCs who are practicing as physician extenders," said District Four Director Marjorie Albohm, MS, ATC. "This is about every athletic trainer, because the rule incorrectly implies that athletic trainers are not trained to provide rehabilitation services. That will affect every ATC in every practice setting, and if that's not overturned, it will be used against us as we go forward."

In addition to causing immediate harm to athletic trainers, the CMS rule contradicts both Congressional intent and long-standing Medicare policy, but it offers no reasons for doing so. The new rule also makes it harder for the public to get medical care because it shrinks the pool of qualified personnel who can provide therapy services.

NATA has tried for months to dissuade CMS from implementing the new rule, using lobbying and grassroots efforts. These initiatives will continue while the lawsuit is pending.

The NATA Board of Directors decided unanimously to sue CMS during its recent board meeting in Washington, D.C.

"We have built a war chest over the years to put us in a position now that we can fight these battles and do what we have to do to make sure our profession moves forward and we bring the best possible care to the public," Kimmel said. "We are standing up for ourselves. We are standing up for our members. That's why they join the association—because collectively we can tackle the issues that none of us could tackle alone."

Albohm and Kimmel both advise members to learn as much about the CMS issue and NATA's lawsuit as possible in order to discuss it calmly and intelligently.

“Because this is a national issue, there are ways to make sure it doesn’t interfere in your working relationships with other allied health care providers,” she said. “You don’t have to make it a personal issue. Be able to clearly articulate our position so that in discussions with colleagues it’s not a battle—it’s an opportunity to educate people.

“That might take us out of our comfort zone a little, since athletic trainers traditionally are the good guys, the peacemakers,” Albohm added. “Because the stakes are so high now, the time has come to stand up for our profession.”

Kimmel agreed.

“This is not about us versus any other profession,” he said. “I think certified athletic trainers working beside physical therapists can say that we’re not looking to restrict a PT’s right to practice and to do the work they are educated and licensed to do. We are only looking for the same right for athletic trainers.”

CALL TO ACTION

What can you do? Grassroots action from EVERY setting is crucial to making our voice heard. Your Senators and Representative need to hear from you as soon as possible to help stop CMS from moving forward with implementing this Final Rule on June 6.

Go to NATA’s Web-based Legislative Action Center to find your Senators and Representatives. Click on the link below to go to the Governmental Affairs page, then click on "Legislative Alert Center." Click on "NATA/CMS Incident To Issue" in the "Action Alert!" box to find the sample letter to send to your members of Congress. You also can access the Legislative Alert Center from the page that appears after you log in to the NATA Members section.

Please take time to sign up for the Action E-List at the bottom left-hand of the page by simply checking that box.

Thank you for taking the time to contact your legislators. Your participation is key!

NEED HELP?

If your job has been or might be negatively affected by this CMS decision, please contact Paul Carter, NATA National Manager of Markets and Revenue, at paulc@nata.org or 1.800.879.6282, ext. 133.

LATA Summer Symposium Days Away

It’s not too late to register for the 2005 LATA Educational Symposium in Natchitoches June 27 to 29. Committee Chair Ed Evans has been true to his word in organizing a quality event. No session will start before 9 a.m. or last more than three hours. Yet the program will still provide you with 10 continuing education units for your \$100 registration fee.

Registration at the Ramada Inn & Suites will begin at 8 a.m. Monday morning with the exhibitors opening up at 11 a.m. The first session will start at 12:30 p.m. For a detailed schedule of events, go to the summer symposium link on the association’s website www.latainc.org.

If you have any questions or problems planning your trip to Natchitoches, call Ed Evans at (318) 471-5460.

Grambling Athletic Trainer Loses Battle with Cancer

The LATA lost a great friend and colleague in the death of Ricky McCall, who lost his battle with cancer March 5, 2005.



McCall, a Delhi native, had worked as Grambling State University's athletic trainer since 1990. His determined effort to continue working through illness and his always sunny disposition remain a source of inspiration.

"I feel honored to say that Rick was a friend of mine," said William Hobdy, a former GSU basketball player and nephew of legendary Tigers hoops coach Fred Hobdy. "He was a person that could turn your frown into a smile because of the charisma that he constantly displayed. He was there for me on many occasions as a friend."

McCall began work at Grambling after earning a degree in sports medicine from the United States Sports Academy. He earned a master's degree in sports medicine from GSU. Certified with both the Louisiana State Board of Medical Examiners and the Board of Certification for Athletic Training, McCall was assigned to work with every program on campus.

"Ricky was the glue that held this team together," said GSU football coach Melvin Spears, who finished an injury-riddled 2004 season at 6-5. "He brought stability and calmness to a tough situation when these players got hurt. He did a remarkable job in making sure they got the care they needed to get back on the field."

The community also reached out. Members of the Grambling Sports Radio Network, led by sideline reporter Eric Lydell, collected donations last year to help defray treatment expenses.

McCall never slowed down. He would spend his last days fighting the cancer growing inside of him, but continued attending to GSU's student-athletes and caring for coaching legend Eddie Robinson, who suffers from Alzheimer's-like symptoms. "Ricky McCall," Spears said, "was a warrior. We are going to add his name to our award for courage."

Lydell said that's why he wanted to pay tribute to McCall—who was not only a good friend, but also a selfless benefactor throughout the community.

"He worked with the high schools and came out for church functions. He was always there," said Lydell. "That was something I admired about Rick. No matter what he was going through—even when he was in the hospital—he never stopped working for others. He would call from the hospital to check back to make sure everything was going well."

"I was so proud of him when he became the head trainer at GSU," said Hobdy. "His presence will be missed, but I thank God for the period of time that I was allowed to be associated with him."

McCall is survived by his former wife, Amanda, and their two children—18-year-old daughter Metria and 17-year-old son Valon.

A scholarship fund has been established at Grambling State University in honor of McCall. Contributions can be made to:

Ricky B. McCall Scholarship Fund
GSU Office of Development
c/o Catherine B. Nicholson
P.O. Box Drawer 1185
Grambling, LA 71245

Portions of this were taken from an article written by Nick Deriso for The News Star

Dr. Andrews to Speak at Tulane

Noted sports medicine physician and surgical pioneer, Dr. James Andrews, from Alabama Sports Medicine and Orthopaedic Center will be presenting a series of lectures at Tulane Medical School in mid-June.

He will be giving three lectures during two sessions the weekend of Friday, June 17 and Saturday, June 18th. On Friday, Dr. Andrews' lecture "Pitfalls in ACL Surgery" will begin at 4:00 p.m. in Auditorium 6001 on the sixth floor of Tulane Medical School. Saturday morning his lectures will continue at 8:00 a.m. in the first floor auditorium. These talks will be "The Throwing Shoulder-Putting it all Together" and "Elbow Injuries in Throwers".

This is a unique opportunity to learn from one of the premier sports medicine physicians in the world. If you are able to, please take the time to attend one or all of Dr. Andrews' lectures. For more information, contact Tab Blackburn at (504) 864-2140 or by e-mail at turnerab@aol.com.

Student Athletic Training Workshop in Lake Charles

The Lake Area Athletic Training Association is hosting their annual summer student athletic training workshop June 5-7 at the Dowell Fontenot Sports Medicine Center on the campus of McNeese State University.

Three sections are available: basic, intermediate and advanced. For more information call Jim Murphy at (337) 475-5633 or Amanda at 1-800-735-5633.

LATA Members Recognized at SEATA

Several Louisiana athletic trainers were honored for their service and dedication to the athletic training profession during the Southeast Athletic Trainers Association Awards Luncheon held at the SEATA convention held March 31 through April 3 in Atlanta, GA.

SEATA College and University Athletic Trainer Award
Bob Godwin, Southeast Louisiana State University

SEATA District Award
Ray Castle, Louisiana State University

NATA 25 Year Service Award
Ed Evans, Northwestern State University

NATA Athletic Training Service Award
Ronald Harper, Douchtown High School
Janet Passman, Louisiana College

This was the second year in a row that the District and College and University awards were given to Louisiana athletic trainers. In 2004, Ed Evans received the College/University award and Janet Passman received the District award.

Congratulations to our Louisiana award winners!!

State Renewal Due June 30th

Most Louisiana athletic trainers should have already received their state license renewal packet from the Louisiana State Board of Medical Examiners.

If you have not received your renewal packet yet, contact the LSBME as soon as possible. If your renewal is not received by June 30th you could risk losing your Louisiana state license.

It is important that you complete the continuing education portion if you are required to do so this year. If you are not sure if you need to report CEU's this year, look yourself up on the state board's website www.lsbme.org, in the verification section. If your issue date ends in an odd year, you are required to submit continuing education information this year.

The renewal packet is somewhat confusing with regards to the renewal fee. Two different amounts are listed on different pages of the renewal information. The fee is \$100. Be sure to include a check or money order when sending in your renewal information.

LATA Committee Updates

Public Relations Committee

By Andy Hurla

Website Progress is slow in regards to developing new website format or platform. At the LATA Summer Symposium we are going to ask for interested members to consider forming a small Task Force facilitate this project. Until then, Trey will continue to operate the website as usual. To submit items for posting, contact Trey at younger3@usa.net.

Lagniappe The amount of information being submitted has picked up. However, we could still use more feedback from the membership. Whatever you send, we'll print. If you have anything to submit for the newsletter, contact Andy at Andrew.hurla@christushealth.org.

Scrapbook Jamie is taking a break from scrapbooking for a while. A new baby tends to slow her down a bit. However, she would appreciate LATA members bringing any items they wish to add to the scrapbook to the summer meeting. Members can reach Jamie at thecoehranfamily@bellsouth.net.

Governmental Affairs Committee

By Allen Fugler

Legislative Update

Although this year's session is billed as a "fiscal matters only" session (meaning, "grab your wallets!"), the state constitution allows for each of the 143 State Senators and Representatives to introduce up to five "non-fiscal" bills each. These bills are highly sought after by special interest groups and constituents because of their scarcity. The result: over 1100 pieces of legislation have been introduced in this abbreviated, 60-day Regular Session.

As the LATA Government Affairs representative, I review each bill and track those of interest to the Athletic Training profession. Below is a list of the bills that have been identified for the LATA:

Bill Number	Author	Description
HB 277	Representative Taylor	Provides for a \$1000 tax credit for certified teachers performing certain types of after school activities like coaching, etc.
HB 333	Representative Sheppard	Permits Physician Assistants to make direct referrals to Occupational Therapists
HB 488	Representative Guillory	Prohibits annual tests for high school sport

HB 540	Representative Jefferson	contest officials Defines and prohibits bullying in school settings, and requires school boards to adopt standards of discipline
HB 566	Representative Carter	Prohibits HMOs from referring to chiropractors services that are/can be performed by other physicians
SB 176	Senator Fontenot	Requires all local school boards except Orleans to levy a 15 mills tax and dedicate it to teacher salaries

By far the most important bill for ATCs this session is Senate Concurrent Resolution 52, authored by Senate President Don Hines. Last session, Senator Hines, the only physician in the legislature, authored a study resolution (at our request) to direct the House and Senate Health and Welfare Committees to jointly study the health and safety of student athletes. The resolution sparked discussions with the LATA, LHSAA, BESE, LA Orthopedic Association and other interested groups, and led to a recognition for the need for further study. Several LATA members on the Secondary Task Force, including Chairman Ronnie Harper, Ray Castle, Donnie Kron, Toby Dore and Gary Lewis, met with Senate Education Committee Staff Attorney David Smith and made presentations on the scope of the problem and suggestions for improving athlete health care in school settings.

SCR 52 directs the Board of Elementary and Secondary to further study the same issue and report to the Departments of Education and Health and Hospitals, and to various associations that include the LATA. At earlier meetings, BESE expressed great interest in this issue and volunteered to undertake the study; they also indicated that they would want the LATA to provide information and suggestions. The text of SCR 52 can be found on the state legislative web site at www.legis.state.la.us/billdata/streamdocument.asp?did=302455.

SCR 52, like last year's study resolution, provides an important opportunity to bring the problem of underserved and unmet athletic training needs to the audience best positioned to help solve it. As the study proceeds I will update everyone on its status and the involvement of the LATA in the process. The resolution requires a presentation of results by BESE before the 2006 Regular Session.

I will update the final status of all of these bills after the conclusion of the Session (on June 23rd) in the next issue of the *Lagniappe*.

Thanks for your ongoing interest in and support of the Governmental Affairs Committee, and the important work it does for LATA members.

Organizational Affairs Committee

Nothing submitted for this issue.

Education Committee

Nothing submitted for this issue.

Financial Affairs Committee

Nothing submitted for this issue.

Research & Development Committee

Nothing submitted for this issue.

Secondary School Committee

Nothing submitted for this issue.

Member Updates

New Arrivals

On March 14th Scott and Jamie Cochran welcomed to the world their second child Amie Claire at 7lbs 3oz and 19 ¾ inches. Her big brother Brandon (4) is very excited about his new baby sister.

May 4th saw the arrival of Ethan Travis to LATA member Stacey (Clouse) Beebe and her husband Jason. Ethan is built very much like his dad (BIG) and weighed in at 8 lbs 4.5 oz and 20.5 inches.

BOC Announces Change to Exam Format

Introduction

The Board of Certification (BOC) is pleased to announce that the certification exam will transition to computer-based exams (CBE). The tentative time table is for CBE to begin in the early spring of 2006. All sections of the current examination program, including the practical, will be integrated into a format that will be delivered via computer.

The function of the BOC examination program is to identify individuals who have met the BOC requirements and have demonstrated a minimal level of knowledge and skill in athletic training as defined by the BOC Role Delineation Study. Foremost in every decision made by the BOC is the effect on public safety. As an organization, the BOC is committed, through its mission and core values, to serve the public by identifying athletic trainers through its examination program, standards of practice and continuing competency and discipline programs.

The BOC has been listening, watching and participating in discussions related to computer delivered testing the past eight to ten years. Directors and staff have attended numerous educational sessions during that time, learning from others who have faced the question of whether to computerize delivery of their exams. Our customers (e.g., candidates, certificate holders, educators, employers) have asked with increasing frequency if the BOC has considered offering the exam via computer. They raise concerns relating to travel time and costs, costs associated with administering the exam, exam security and the reliance on volunteers for successful exam delivery.

What became clear to the BOC Board in 2003 was the need for the Board to engage in a formal feasibility study on this issue. The Board recognizes that the various changes the athletic training community has experienced in recent years have revealed there is also an emotional side to these questions and decisions. To ensure an unbiased review of the facts, Professional Examination Services, Inc. (PES) was selected because of their experience in this very specific project of feasibility studies for examination delivery. What follows is a short description of the process the BOC Board has engaged in over the past 18 months.

The Feasibility Study

The objective of the study was to assess the feasibility of computerizing the BOC examination program. That is, transitioning it from two paper and pencil examinations and a hands-on practical examination to an examination program that could be delivered via computer.

Phase 1—Strategic planning and initial data gathering using subject-matter experts (SMEs) from the BOC

Phase 2—Extended data gathering using SMEs with expertise in such areas as complex simulations, multiple test events (e.g., multiple-choice questions and computer simulations), delivery systems including both hardware and software, and opinions of key stakeholders (public, state regulatory agencies, ATEP, candidates, ATC® credential holders, NATA, JRC-AT, employers, other healthcare organizations)

Phase 3—Integration of data gathered and analysis of costs and time frames based on information collected in Phase 2 in regard to

- (a) Item development, test construction, and scoring software
- (b) Delivery systems and associated hardware and software
- (c) General assumptions related to test length for the proposed examination and candidate volumes

Phase 4—Integration and interpretation of data to identify “deal breakers” with regard to key stakeholders

Phase 5—Development and presentation of feasibility report to the BOC Board of Directors

Phase 6—Request for clarification from BOC Board of Directors to PES

Phase 7—Discussion and action by BOC BOD at face-to-face meeting on February

What the study proved

- The three individual components of the BOC testing program demonstrate excellent psychometric characteristics (i.e., the exam sections are psychometrically sound and legally defensible).
- Low-to-moderate correlations among the examinations indicate that the three components are measuring separate and unique knowledge and skills (i.e., each section of the exam measures different parts of the entry-level athletic trainers’ knowledge and skill). The percentages of first-time curriculum candidates passing each component were higher than for first-time internship candidates and repeat candidates.
- This pattern of examination results indicates that performance on the practical examination contributes less independent information to the summative pass versus fail decision for each candidate than does either performance on the multiple-choice examination or the simulation examination. Stated simply, candidates who pass the multiple-choice and simulation examination are highly likely to pass the practical examination.

The Board’s Decision

After careful and extensive review of the data from PES, the Board of Directors has decided to convert the certification exams to a computer based format that assesses cognitive skills, clinical decision making and practical skill applications as outlined in the BOC Role Delineation Study. The new format will allow the BOC to assess the candidates knowledge with regard to many skills and procedures required for higher level critical thinking to a degree not currently possible (e.g., management of an unconscious athlete; a cervical spine injury; obtaining a history). Additionally, this method will allow the BOC to evaluate techniques that could potentially cause serious harm to the population that the athletic trainer serves. The modified format will allow greater breadth of skill and knowledge assessment because the constraints of equipment and space will no longer be factors in the exam administration.

What does this mean for candidates taking the exam in 2005?

Candidates who are taking the exam during 2005 will continue to take the three sections of the examination according to the published schedule. Keeping in mind that the timetable outlined above is tentative, any candidate who has not successfully completed any section of the BOC examination by the *end of the 2005 examination year (January/February 2006)* will have to successfully complete the modified computer delivered examination to achieve certification. Candidates who will be graduating in the fall of 2005 may choose to delay their exam until 2006 in order to take the new format.

Nicholls State Students Found Honor Society

As a start to their Athletic Training Month activities, Nicholls State University formed the Gamma Chapter of Iota Tau Alpha Athletic Training Education National Honor Society on February 23.

The charter members include:

President	Amelia Mason
Vice President	Gus Stevenson
Treasurer	Jennifer Rodriguez
Historian	Michelle Donellan
Secretary	Colleen Amedee

To qualify for membership in Iota Tau Alpha athletic training students must hold a GPA of 3.0 or better and be in good academic standing in an Athletic Training Education Program.

Iota Tau Alpha (Iatreuomen Tous Athleuontes) translates to "We heal those contending for the prize."

Proposed Changes to BOC Continuing Ed Guidelines

As the end of the continuing education (CE) reporting period approaches in December 2005, the proposed revisions of the *Role Delineation Study 5th Edition* (RD 5) Continuing Education Guidelines are in the process of being finalized. These guidelines reflect proposed changes that will be reviewed and implemented and are important for all Certified Athletic Trainers. RD 5 Continuing Education File Folders will be mailed out immediately after these changes are approved and will outline the revised guidelines.

1. CE Stagger

Beginning in 2006, the BOC will implement staggered continuing education (CE) reporting. The first three years of implementation will require prorated CE submission. Once the initial implementation is complete you will report your CEUs every three years. Please refer to the table below for your CE reporting schedule:

Last Name Begins With	Number of CEUs	Date CEUs Due	CEUs Due Next
A-G	25	Dec. 31, 2006	75 CEUs due Dec. 31, 2009
H-O	50	Dec. 31, 2007	75 CEUs due Dec. 31, 2010
P-Z	75	Dec. 31, 2008	75 CEUs due Dec. 31, 2011

Credential holders who are certified during or post 2006 will be required to report CE three years from their certification year. In other words, all credential holders certified in 2006 will be required to submit 75 CEUs by December 31, 2009; all credential holders certified in 2007 will be required to submit 75 CEUs by December 31, 2010 and so on.

The Board of Directors recently approved this change in order to streamline the reporting functions at the BOC office. As you can imagine the BOC reviews and receives 20-25 thousand continuing education reports the last year of the reporting period. The CE stagger will alleviate this massive number by reviewing 1/3 of the credential holders each year. As a result, the BOC will increase efficiency and productivity in the CE department, in turn, providing stronger customer service each year. Additionally, BOC Approved Providers will benefit from this change by having a consistent flow with program scheduling.

2. Reduce Number of Required CEUs

The second change is to reduce the number of CEUs required per reporting period from 80 to 75 CEUs every three years. This allows the BOC to divide the CEUs evenly over the three year period.

3. Category Changes

Current Category	Proposed Max Number of CEUs Allowed in the Category	Proposed Change	Clarification	CEUs
A	75	No Change		
B	50	Add exam item writing.	Includes BOC exam developers and other exam developers for other professional exams.	5 per year of active item writing
B	50	Add home study reviewers.	Includes BOC home study reviewers and reviewers of refereed publications.	5 per review (limit 10 per year)
C	75	No Change		
D	0	- Eliminate Category D. - Show proof of ECCC one per year. - Eliminate ECCC for CEUs.	ECCC is very important and quite necessary. ECCC will be required every year rather than once per reporting period to ensure public safety. However, ECCC is now an entry level requirement to become eligible to sit for the exam.	0
D	0	Insert terminology to clarify ECCC.	ECCC must comply with International Guidelines 2000 for Emergency Cardiac Care	0
E	20	No Change		

Your Input is Needed

Please submit your comments regarding RD 5 Continuing Education Guidelines in writing to the address below. Opportunity for public comment will close **June 30, 2005**. Comments will be forwarded to the Board of Directors for their final decision in July of 2005.

BOC
 Attn: RD 5 CEU Guidelines
 4223 So. 143rd Circle
 Omaha, NE 68137
 Fax: (402) 561-0598
 Email: shannonl@bocatc.org

Athletic Training Month Activities Raise Awareness of Profession

Many athletic trainers throughout Louisiana took the time this spring to promote our profession by hosting workshops and other activities. Because of our efforts, athletic training month was a success here in Louisiana.

Several athletic trainers came together to organize workshops and seminars throughout the state. The athletic training staff of Southeast Louisiana State University hosted an ASK KHS (Kinesiology and Health Sciences) Symposium during March. A variety of kinesiology and athletic training topics were covered by professionals from around the country. Dr. Mike Brunet of Louisiana College gave the keynote address on Disordered Eating, Dr. Lanny Boswell of the US Navy spoke to students on Ergogenic Aids, and a number of other professionals presented on topics related to athletic training, sports management and health promotion.

Kevin Romero and his athletic training staff at Dauterive Hospital in New Iberia, put together a mini student trainer clinic during Athletic Training Month. They had a Family Medicine Physician, a Physical Medicine Doctor, an Orthopedic Surgeon, and Scottie Patton Head Athletic Trainer for the New Orleans Saints spoke at their workshop. The clinic educated high school student athletic trainers on common upper extremity injuries and proper taping and bracing and the important role of Athletic Trainers fill in healthcare.

The staff from CHRISTUS Louisiana Sports Medicine waited until April, but did their part for Athletic Training Month by hosting their third annual High School Student Athletic Training Workshop. The advanced section covered topics including hydration, equipment removal, and advanced taping. The basic students learned about emergency splinting, ankle and wrist taping, and the integration of the sports medicine team. Both sections participated in sessions on responding to athletic emergencies and backboarding.

Others chose to pursue more of a grassroots effort. Scotti Vermaelen displayed posters at three of the hospitals where she works in Baton Rouge, Gonzales, and Plaquemine. She also distributed numerous handouts at these hospitals describing our profession for other health care professionals to read.

Meanwhile, Andy Hurla at CHRISTUS Louisiana Sports Medicine send out a daily "Athletic Training Fast Fact" e-mail to the entire staff at CHRISTUS St. Frances Cabrini Hospital in Alexandria. This information was well received by the hospital staff members and administration. Many noted that they now have a better appreciation and understanding of the athletic training profession.

Large or small, all contributions to the success of Athletic Training Month were essential to its success and to the increased awareness of the athletic training profession in the public.

What do you have planned for next year??

Volunteers Needed for 2006 NATA Meeting and Clinical Symposia in New Orleans

It is still over a year away, but start making plans to attend the 57th Annual NATA Symposium. As host state association, the LATA is asked to take a key role in assuring that the event runs smoothly. For this to happen, your assistance is needed to serve as a volunteer before and during the convention.

Volunteers are need to assist in some setup, working registration desks, as well as, handing out and collecting surveys at each of the sessions, and many other tasks.

Anyone can volunteer, especially certified members and athletic training students. No special skills or qualifications are necessary. For some specialized tasks, such as manning the registration computers, you can be trained on site by the NATA staff.

In exchange for your time and effort, a portion of your registration fee will be refunded to you, depending on the number of hours that you volunteer.

If you are interested, please contact 2006 Co-Host Committee Chairs:

Cary Berthelot
cberthelot@selu.edu
(985) 549-2351

Larry D'Antoni
ldantoni@mail.stjames.k12.la.us
(225) 268-1885

Employment Opportunities

Outreach

CHRISTUS Louisiana Sports Medicine at Cabrini

POSITION: Athletic Trainer

DESCRIPTION: Provide outreach Athletic Training services high schools in the Central Louisiana area. Visit 3-4 schools twice per week and serve as full-time athletic trainer to one school: including coverage of daily practices, all home events and away football games. Additional community event coverage as assigned.

QUALIFICATIONS: Current BOC Certification and/or Louisiana State Certification required. New graduates are encouraged to apply.

COMPENSATION: Base salary of \$30,000, full health benefits including vision and dental, mileage reimbursement, continuing education allowance, NATA and State dues paid.

CONTACT:

Scott Cochran, ATC, LAT
Department Manager
Sports Medicine Department
CHRISTUS St. Frances Cabrini Hospital
3330 Masonic Drive
Alexandria, LA 71301
Scott.cochran@christushealth.org
Fax: 318-448-9633
Office: 318-448-4959
Cell: 318-664-3343

APPLICATION PROCEDURE: Please send (mail, fax, or email) letter of application and resume along with five (5) professional references. Interviews may be conducted at the NATA convention in Indianapolis.

Start Date: Mid July 2005

EMPLOYER INFORMATION: CHRISTUS Louisiana Sports Medicine at Cabrini (CLSM) is a community service program of CHRISTUS St. Frances Cabrini Hospital in Alexandria, LA. CLSM provides athletic training services to 50 high schools across 10 parishes of Central Louisiana, as well as Northwestern State University and Louisiana College.

North Oaks Sports Medicine

POSITION: Certified Athletic Trainer

DESCRIPTION: High school event coverage for the 2005-2006 school year. Events can include football games, basketball games, tournaments and other events during the school year. North Oaks Sports Medicine provides ATC coverage for Tangipahoa and Livingston parish junior high and high schools.

QUALIFICATIONS: BOC Certification.

Contact:

Jeffrey M. Schmitt or Tina Gunaldo
schmittj@northoaks.org gunaldot@northoaks.org
North Oaks Rehabilitation Services - Sports Medicine Program
PO Box 2668
Hammond, LA 70404
(985) 230-6160

North Oaks Sports Medicine, a community outreach program of North Oaks Health System

College and University

University of Louisiana—Lafayette

POSITION: Assistant Athletic Trainer

RESPONSIBILITIES: The Assistant Athletic Trainer will work under the direct supervision of the director of athletic training. The assistant athletic trainer's responsibilities will include, but are not limited to the following: assist the director of athletic training in the supervision of the athletic training room, prevention, treatment and reconditioning of athletic injuries, medical and insurance record keeping, recruitment and supervision of student trainers. The assistant athletic trainer will be directly responsible for all medical aspects of the women's basketball team. Accept other duties assigned by the director of athletic training. Position will include teaching duties. Adhere to NCAA rules and regulations.

QUALIFICATIONS: Must have an earned Bachelor's Degree (Master's Degree preferred); and be currently certified as an athletic trainer by the National Athletic Trainers' Association and the State of Louisiana. Must have experience in working with both men and women athletes. Experience with college student athletes preferred.

SALARY: Commensurate with professional training and experience.

APPOINTMENT: On or before June 30, 2005

APPLICATIONS: Applications will be received until time appointment is made.

Send resume to:

Mr. John W. Porche, ATC; LAT
Director of Athletic Training/Assistant Athletic Director
University of Louisiana – Lafayette
201 Reinhardt Drive
Lafayette, Louisiana 70506

University of Louisiana—Monroe

POSITION: Assistant Athletic Trainer

DESCRIPTION: The Assistant Athletic Trainer will provide direct supervision of women's basketball, oversee coverage of volleyball, women's soccer, women's tennis, as well as provide supervision of graduate assistants and student athletic trainers assigned to the above named sports. This person will also coordinate rehabilitation programs for student-athletes, assist in drug testing of female athletes, handle insurance claims for student-athletes with athletic injuries, and other duties as assigned by the Head Athletic Trainer.

QUALIFICATIONS: The qualified applicant will be NATABOC certified, Louisiana State Licensed or eligible, hold a Master's Degree in Athletic Training or a related field from an accredited institution, and preferably have 2-5 years experience beyond the graduate assistant level in Division I Intercollegiate Athletics.

CONTACT:

Phillip A. Shaw
Head Athletic Trainer
University of Louisiana at Monroe
Athletic Department
308 Stadium Drive
Monroe, LA 71209
Phone: 318-342-5381
Fax: 318-342-3577
pshaw@ulm.edu

APPLICATION PROCEDURE: Please send (mail, fax, or email) letter of application and resume along with five (5) professional references. Interviews will be taking place at the NATA convention in Indianapolis.

Apply-By Date: June 1, 2005
Starting Date: August 1, 2005

The University of Louisiana at Monroe is an NCAA Division I institution. ULM currently has 16 varsity sports which compete in the Sun Belt and Southland Conferences

Graduate Assistantships

Grambling State University

POSITION: Graduate Assistants Athletic Trainers (2)

DESCRIPTION: Two Graduate Assistant positions with the Grambling State University (GSU) Athletic Department. Responsibilities include but not limited to: assist athletic training staff with overall athletic healthcare of all student athletes, team coverage of assigned sports, supervision of student athletic trainers and assist with administration duties assigned by staff. Assistantship is 10 month stipend of \$6,000 (each).

QUALIFICATIONS: Must be NATABOC certified or eligible. All applicants must be eligible for admission to the GSU Grad School.

CONTACT:

Patricia Taylor, MEd, ATC, LAT
Head Athletic Trainer
Grambling State University
Athletic Department

PO Box 868
Grambling, LA 71245
Phone: 318-274-6542
Fax: 318-274-3203
Email: taylorpa@gram.edu

APPLICATION PROCEDURE: Please mail resume, cover letter, and list 3 people with address & phone numbers for recommendations.

Apply-By Date: July 15, 2005
Starting Date: August 8, 2005

EMPLOYER DESCRIPTION: Grambling State University is located in Northern Louisiana. We are 45 min east of Shreveport, LA. GSU is an HBCU and home of legendary Coach Eddie Robinson. There are 18 NCAA Div 1AA teams and we participate in the Southwestern Athletic Conference (SWAC).

University of Louisiana—Monroe

POSITION: Graduate Assistant Athletic Trainer

DESCRIPTION: Two (2) Graduate Assistant positions with the University of Louisiana at Monroe athletic department. Responsibilities include but are not limited to: assist the athletic training staff with the overall athletic healthcare of all student athletes, team coverage of assigned sports, supervision of student athletic trainers, and assist with administrative duties as assigned by staff. Assistantship includes full tuition waiver and 9-month stipend of \$5,000.

QUALIFICATIONS: Applicants must NATABOC certified or eligible. All applicants must be eligible for admission to the University of Louisiana at Monroe Graduate School and accepted into program.

CONTACT:
Phillip Shaw, M.Ed., ATC
Head Athletic Trainer
University of Louisiana at Monroe
Athletic Department
308 Stadium Drive
Monroe, LA 71209
Phone: 318-342-5381
Fax: 318-342-5367
Email: pshaw@ulm.edu

APPLICATION PROCEDURE: Please send letter of application, resume, and three (3) letters of recommendation.

Apply-By Date: June 1, 2005
Starting Date: August 1, 2005

EMPLOYER DESCRIPTION: The University of Louisiana at Monroe is an NCAA Division I institution. ULM currently has 16 varsity sports which compete in the Sun Belt and Southland Conferences.

CHRISTUS Louisiana Sports Medicine at Cabrini

POSITION: Graduate Fellow Athletic Trainer

DESCRIPTION: Serve as full-time athletic trainer to one high school in the Central Louisiana area: including coverage of daily practices, all home events and away football games.

QUALIFICATIONS: Current Louisiana State Certification. BOC Certification eligible. Qualify for admission to the Northwestern State University Graduate School.

COMPENSATION: Stipend of \$12,000

CONTACT:

Scott Cochran, ATC, LAT
Department Manager
Sports Medicine Department
CHRISTUS St. Frances Cabrini Hospital
3330 Masonic Drive
Alexandria, LA 71301
Scott.cochran@christushealth.org
Fax: 318-448-9633
Office: 318-448-4959
Cell: 318-664-3343

APPLICATION PROCEDURE: Please send (mail, fax, or email) letter of application and resume along with three (3) professional references. Interviews may be conducted at the NATA convention in Indianapolis. Applications will be accepted until the position is filled.

Start Date: August 1, 2005

Employer Information: This position is administered through Northwestern State University and managed by CHRISTUS Louisiana Sports Medicine at Cabrini. CLSM is a community service program of CHRISTUS St. Frances Cabrini Hospital in Alexandria, LA. CLSM provides athletic training services to 50 high schools across 10 parishes of Central Louisiana, as well as Northwester State University and Louisiana College

Upcoming Events & Meetings

June 2005

- | | |
|------------------------------------|--|
| 5 th -7 th | Lake Area Athletic Trainers Association Student Workshop
At McNeese State University, open to Grades 8-12
Contact Amanda for more information 1-800-477-5633 |
| 12 th -16 th | NATA Annual Meeting and Clinical Symposium, Indianapolis, IN |
| 26 th | BOCATC Certification Exam, University of Louisiana at Lafayette |
| 27 th -29 th | LATA Summer Meeting and Clinical Symposium, Natchitoches |

July 2005

- | | |
|------------------------------------|--|
| 4 th | Independence Day |
| 20 th -22 nd | LHSCA Annual Summer Coaching Clinic |
| 20 th | All Star VB Game, Southern University, Minidome, 7:00 p.m. |
| 21 st | All Star Basketball Games, Southern University, Minidome
Girls 6:00 p.m. Boys 8:00 p.m. |
| 22 nd | All Star FB Game, Southern University, Mumford Stadium, 6:30 p.m. |

2006

- | | |
|---|---|
| June 27 th -July 1 st | NATA Annual Meeting and Clinical Symposium, New Orleans |
|---|---|

Submit News to *LAGNIAPPE*

- Write a description of the event
- Be sure to include the full names of those involved
- Include dates and locations where it occurred
- Please spell correctly (I can't tell if things are misspelled or not)
- Email it to Andrew.hurla@christusheath.org